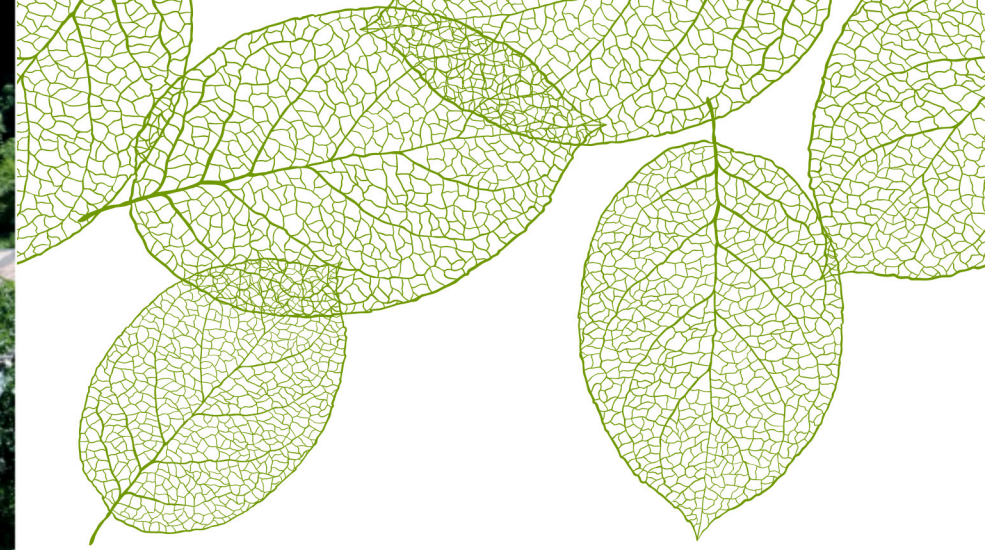


For those of you who are tired from your busy days.  
For those who want to enjoy your trip to Asukamura.



# ASUKAMURA

## NARA WOMEN'S UNIVERSITY

\*This pamphlet was created by students of Nara Women's University for the purpose of contributing to the local community. ("Career Design Seminar B (37) International Group Work A" class at Nara Women's University in the first semester of the 2024 academic year)

# Asukamura

The capital was established for about 100 years from the end of the 6th century to the 7th century, and it is known as the "origin of Japan" where the foundation of the Ritsuryo state system was laid, such as Prince Shotoku's "Establishment of the 17th Constitution" and "Revolution of Taiga" by Prince Nakanaka and Kamatari.





From "Kashiharajingumae"  
east exit

Bus fare  
290 yen  
14min.

Asuka  
daibutsu



p.6



p.5

## Hanakoubou Kamukamu

**Access** 5-minute walk from Asuka station  
**Admission Fee** 1,000 yen  
**Website** <https://www.hana-kamu.com/sp/>

Ishibutai

Bus fare  
290 yen  
7min.



## Asuka temple

**Access** 1-minute walk from "Asukadaibutsumae"  
bus stop  
**Admission Fee** Free  
**Website** None



p.7



## Ishibutai Tomb

**Access** 2-minute walk from "Ishibutai" bus stop  
**Admission Fee** Adults 300 yen(250yen), High school  
students~Elementary school students 100 yen(50yen)  
**Website** None

「Asuka Free tickets for cruising buses (1day, 2days)」

「Asuka Free tickets for cruising buses (1day)」

(Adults 750円 / Childs 380円)

「Asuka Free tickets for cruising buses (2days)」

(Adults 1,100円 / Childs 550円)

You can ride as many times as you like, such as the Tour Bus and the Sakurai Asuka Line!

You can get on and off at various places by bus and get around Asuka at a very good price.

\*You can buy this ticket at...

Kintetsu "Kashiharajingu-mae" station (Central ticket gate)

Kintetsu "Asukaeki-mae" station (Asuka Bitono Kan) TEL: 0744-54-3240

Ishibutai (Ishibutai Parking tollgate) TEL: 0744-54-4577

Nara Transportation Yagi Information Center

7-Eleven Heart In JR Sakurai station South Entrance

Kashihara Tourist Information Center TEL: 0744-27-2070

Kitora Ancient Tomb Mural Experience Center 「Shijino-kan」

TEL: 0744-54-5105

Or it's on sale on Jordan's application "Transfer Information"!



p.10



p.9

## ✓ Takamatsuzuka Tumulus

**Access** 12-minute walk from Kintetsu Asuka Station or the "Takamatsuzuka" bus stop

**Admission Fee** Adults 300 yen (250 yen), University and High School students 130 yen (100 yen Junior High and Elementary School students 70 yen (50)

**Opening hours** 9:00 AM to 5:00 PM  
(last admission at 4:30 PM)



p.11~

## ✓ Nara Prefecture Complex of Man'yo Culture

**Access** 7-minute walk from "Asukadaibutsu" bus stop

**Admission Fee** Please refer to the below site

**Website** <https://www.manyo.jp/>



From  
"Ishibutai"  
bus stop



Bus fare  
220 yen  
5min.

Kawahara



Bus fare  
320 yen  
14min.

Asuka  
Station

# KHANAKOUBOU KAMUKAMU

**Access** 5-minute walk from Asuka station  
**Admission Fee** 1,000 yen  
**Website** <https://www.hana-kamu.com/sp/>



## SUMMER SALE

hanakoubou kamukamu



7月5日 (金) 13:00~15:00  
 7月6日 (土) 10:00~15:00

販売場所 工房

お知らせにもお知らせ下さい。  
 ※要 紹介者名

注：お車は谷へお停め下さい

You can get some  
 information about Training  
 schedule, fan club  
 application, seasonal events  
 etc. from Line!

For those  
 who love flowers  
**Recommendation!**

## YouTube Site

• A little progress in the mortar remodeled courtyard6

[https://youtu.be/80MGs7d-gaM?si=yomt\\_EUoBEip-zL3](https://youtu.be/80MGs7d-gaM?si=yomt_EUoBEip-zL3)

• Cafe 'Brix'

<https://youtu.be/guSeKL8lbt8?si=Bh1UORkdWqknm1pJ>

• Garden "Higashino-tani"

<https://youtu.be/Y7HhZSSHEGo?si=RvEK6GWhNVXfGn6i>

• "Hanano-tani" in June

<https://youtu.be/taEYX53STxk?si=4xHoN1U2aO3Q64g7>

• "Hananotani" in June(2)-The hill of dwarfs-

<https://youtu.be/IuCMjDgGFwg?si=PHrqOpaxsw66UITI>

If you subscribe for our channel "Shokunana", you can see the new video will be uploaded as soon as it is distributed. If you press the playlist button, you can see all the old ones in order. If you can't come to the class, we can give you the ingredients together. Please make a reservation!

# Okadera

Okadera (Ryugai-ji) in Nara Prefecture was founded in 633 AD by the priest Gyoki during the reign of Emperor Tenchi. Initially, the temple complex was located elsewhere, but it was later moved to the site of Prince Kusakabe's Okamiya residence and thus came to be known as "Okadera."

According to legend, the priest Gyoki sealed a dragon that was tormenting villagers, leading to the name "Ryugai-ji" (Dragon Sealing Temple). Situated on a mountainside, it features historic buildings such as the study hall, Nio Gate, and the main hall. The principal image of worship is the seated statue of Nyoirin Kannon from the Tempyo period (an Important Cultural Property), revered as a guardian deity against misfortune for women. Standing at 4.6 meters tall, it is the largest clay statue in Japan.

Okadera is the 7th temple of the Saigoku 33 Kannon Pilgrimage, offering beautiful scenery throughout the seasons. The temple's harmony of history and nature deeply impresses visitors.

**Access** About 10-minute walk from "Teraoka-mae" bus stop

**Admission Fee** Please refer to the below site

**Website** <https://www.okadera3307.com/>

## • Asukadera?

Founded at the end of the 6th century to the beginning of the 7th century at the behest of Soga no Umako, making it Japan's oldest authentic Buddhist temple.



### Main Hall

The Asuka Daibutsu is enshrined in the Main Hall. Originally, during its construction, the Central Golden Hall stood nearly in the same location. Today, the foundation stones of the Central Golden Hall remain in front of the Main Hall.



**Access** 1-minute walk from "Asukadaibutsumae" bus stop

**Admission Fee** Free

**Website** None

### • Three Stone Statues

From left to right: Great Sage Fudō Myō-ō, Bodhisattva Kannon, and Kōbō Daishi. It is said that wishes for good relationships, prosperity in business, and success in academics can come true by praying and sprinkling water on them.

### • Shakyamuni Buddha Statue (Asuka Daibutsu)

This is the principal image of Asuka-dera, commonly known as the Asuka Daibutsu. Designated as an Important Cultural Property in 1940 (Showa 15), its official designation is "Bronze Seated Statue of Shakyamuni Buddha (Enshrined in the Main Hall), 1 Statue." It stands at a height of 275.2 centimeters. The Asuka Daibutsu, exposed to fire during the Kamakura period, retains original parts around the eyes and the three fingers of the right hand's central portion, while much of its current form is believed to be from later reconstructions.



# Asukadera

# Ishibutai?

A stone chamber tomb constructed in the 6th century by stacking 30 massive stones. It is one of the largest in Japan in terms of scale. There is no remaining mound covering the tomb, and the upper surface of the ceiling stones is wide and flat, resembling a stage, hence the name "Ishibutai" (Stone Stage).

The scenery varies  
depending on the time of  
day and season, so please  
enjoy it!

**Access** 2-minute walk from "Ishibutai" bus stop  
**Admission Fee** Adults 300 yen(250yen), High school students~Elementary school students 100 yen(50yen)  
**Website** None





**Access** 6-3 Asuka Murakoshi, Takashi-Gun, Nara Prefecture

**Opening hours** 8:30~17:00

(All year round) \*Except for the year-end and New Year holidays



**Access** 2-1 Asuka Village Gion, Takashi-Gun, Nara Prefecture

**Opening hours** 9:30~17:00

(All year round) \*Except for the year-end and New Year holidays

## 『Asuka Bitono Kan』



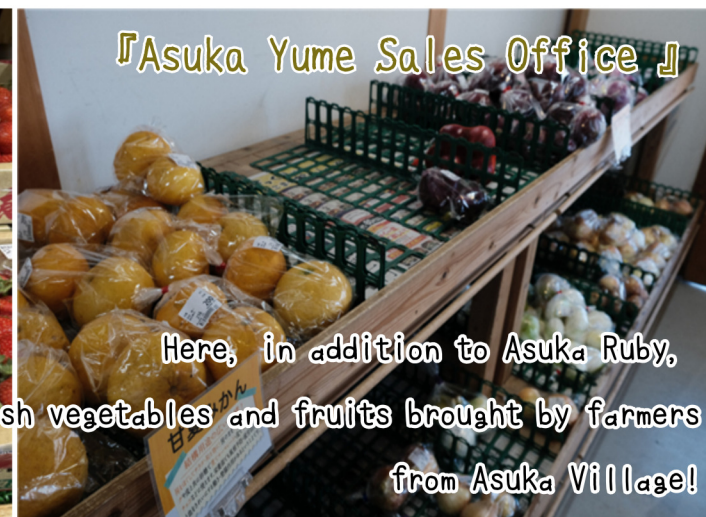
• Strawberry Jam 500 yen /

Made with locally grown Asuka Ruby strawberries from Nara Prefecture!.

• Ancient Rice (200 grams) 700 yen, (35 grams) 200 yen/ Due to its limited production, this rice is highly valued for its rarity.



Here, in addition to Asuka Ruby, you can purchase fresh vegetables and fruits brought by farmers from Asuka Village!



## 『Asuka Yume Sales Office』

# Let's Shopping!



Ancient Rice! 😊

Especially recommended is the highly nutritious black rice!

# Takamatsuzuka Tomb

Takamatsuzuka Tomb was constructed during the Fujiwara-kyo period (694-710 AD) and is a two-tiered circular mound with a diameter of 23 meters (lower tier) and 18 meters (upper tier), and a height of 5 meters. The walls feature vibrant murals of groups of men and women, the Azure Dragon, White Tiger, Black Tortoise, sun and moon images, and constellations on the ceiling. The identity of the entombed person remains unidentified, with three main theories: a prince of Emperor Tenmu, a court official, or a member of the Korean Peninsula royalty.



## <Info.>

- Access: 12-minute walk from Kintetsu Asuka Station or the "Takamatsuzuka" bus stop
- Admission Fee: Adults 300 yen (250 yen), University and High School students 130 yen (100 yen) Junior High and Elementary School students 70 yen (50)
- ※ () for groups of 10 or more
- Hours: 9:00 AM to 5:00 PM (last admission at 4:30 PM)



# Overview of Takamatsuzuka Tomb



Black Tortoise  
on the North Wall



The Black Tortoise (Genbu) is an animal figure representing the northern constellations, depicted as a tortoise entwined with a snake. It is the divine beast that governs the north. The color associated with it is black, and it symbolizes winter (origin of the term "Gen-Tou," meaning "dark winter").



Women's  
Group on the  
West Wall



This mural is famous for depicting the "Asuka Beauties."

The first woman from the left holds a blue fan (en-ei) and another holds a ritual scepter (nyoi). All the women are wearing long skirts with vertical patterns and have their hair tied back. (En-ei: a tool used by nobles to hide their faces during outings; Nyoi: a tool used in ceremonies)



Star Chart



On the ceiling of the stone chamber (which houses the coffin), near the center, there are stars of the Ziwei Enclosure, and around them, 28 lunar mansions (seven for each of the four directions) are depicted.

The stars are represented by 9 mm circular pieces of gold foil, connected by red lines to form the constellations. (Stars of Ziwei Enclosure: stars where the Heavenly Emperor resides; Star chart: the origin of the Four Guardian Gods)

# Nara Prefecture Complex of Man'yo Culture



奈良万葉文化館西口から徒歩3分！

Opening Hours: 10:00 to 17:30 (Last admission at 17:00)

Closed on:

Every Monday (If Monday is a public holiday, closed the following weekday)

Year-end and New Year holidays (December 28th to January 4th)

Scheduled Exhibit Change Days:

※ For details, please refer to the "Annual Schedule"

2024 Exhibit Change Dates:

- ・ May: 8th, 9th, 14th to 17th
- ・ July: 9th, 10th, 17th to 19th
- ・ September: 18th, 19th
- ・ October: 16th to 18th
- ・ December: 10th, 11th
- ・ March (2025): 11th to 14th

Admission Fees:

<Entrance Fee>: Free (General exhibition rooms and special exhibition rooms)

<Exhibition Viewing Fee>: Charged (For details, please refer to the respective exhibition, event, or workshop information)

<Parking Fee>: Free (Available during Nara Prefecture Complex of Man'yo Culture opening hours, from 9:00 to 18:00)

Located in Nara, the birthplace of Manyoshu, Nara Prefecture Complex of Man'yo Culture

offers an opportunity to explore and learn about ancient culture centered around the Manyoshu collection. Admission is completely free! Engage in quizzes and experience the Manyo Theater to deepen your understanding of the Manyoshu world. In the general exhibition rooms, you can capture photographs that evoke a sense of stepping back in time. Why not take the opportunity to leisurely immerse yourself in the world of Manyoshu?

# Nara Prefecture Complex of Man'yo Culture



■ Glass Blown Corridor



When you look up at the ceiling of the corridor inside the facility, you'll find beautifully crafted blown glass depicting various plants such as cherry blossoms, bellflowers, morning glories, and hydrangeas. These plants were all featured in the Manyoshu poetry collection. Despite photography being prohibited, having illustrations of these flowers would be delightful. They are impressive and exquisite, compelling visitors to stop and admire. Be sure to take a look!



■ Manyo Theater



Manyo Theater presents theatrical performances based on the poems of Manyo poets, exploring their emotions, relationships, and historical contexts through puppetry, video, and animation. The theater features three acts: puppet and video opera performances of "Nukata no Okimi" and "Kakinomoto no Hitomaro," as well as an animation titled "Homeland of Manyoshu." It offers a friendly glimpse into the world of Manyoshu. Performances are held multiple times daily, so consider planning your visit accordingly!



■ Song Plaza



This space recreates an ancient marketplace environment, where stepping into it allows you to capture photos that make you feel like a part of the Manyo people! Within each small house, you can encounter various songs centered around the Manyoshu collection. Additionally, there are quiz-style games and kamishibai (paper theater) featuring stories from the Hitachi no Kuni Fudoki and Nihon Shoki, providing enjoyable opportunities to learn about Manyo culture!

# Let's Shopping!

Here are some recommended souvenirs from the museum shop:

(at Nara Prefecture Complex of Man'yo Culture)



At the Manyo Culture Museum, guides provide explanations about the exhibits throughout the facility for free. Their insights made the visit very informative and enriching, revealing details not apparent at first glance. I highly recommend using this service when you visit!

- Haniwa ¥200 each/ Compact and reasonably priced, perfect for souvenirs to friends! They are irresistibly cute.
- Japanese Painting Postcards ¥100 each, ¥400 for a set of 5/

Featuring 154 pieces of Manyo Japanese paintings from the museum's collection and 15 award-winning pieces from the Manyo Japanese Painting Grand Prix. Why not find your favorite? By the way, I chose this for myself and as a souvenir for my mother!

# Short Story About 'Reiwa'

Do you know the origin of the era name "Reiwa"? It actually originates from the Manyoshu! Knowing this makes the Manyoshu feel a bit closer to us, doesn't it? "Manyoshu," Volume 5, Plum Blossom Songs, Thirty-Two Poems Preface:

『万葉集』巻5・梅花歌三十二首序文

初春の令月（れいげつ）にして、気淑（よ）く風和（やわら）ぎ、梅は鏡前（きょうぜん）の粉（こ）を披（ひら）き、蘭（らん）は珮後（はいご）の香（かう）を薰（かお）らす

"In the early spring, in the lovely month of Rei, when the air is serene and the wind gentle, the plum blossoms open their petals like white powder before a mirror, and the orchids send forth a fragrance as if they were adorning themselves."

[Modern Translation] "In the early spring, in the lovely month, the air is beautiful, the wind gentle. The plum blossoms bloom white like the white powder adorned before a beautiful lady's mirror, and the orchids emit a fragrance akin to the scent adorning their own bodies."

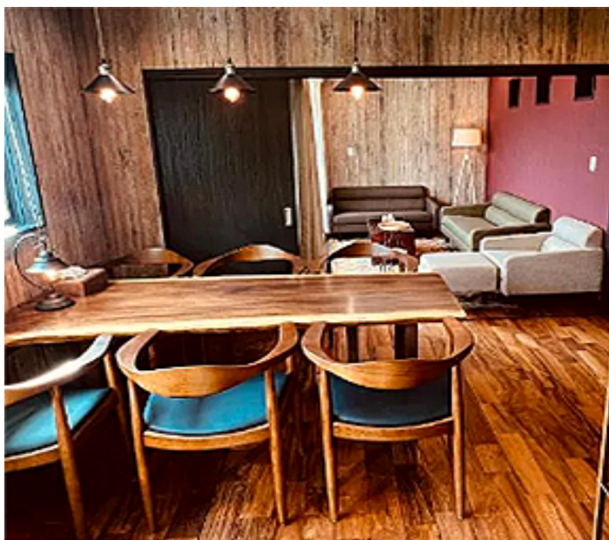
This passage, celebrating the natural beauty surrounding a poetry gathering hosted by the official Ban no Tabito in his plum garden in Dazaifu, reflects the timeless history, rich culture, and the beautiful nature of Japan throughout the seasons.

It signifies passing on these traits of Japan firmly into the next era. Just as the plum blossoms proudly bloom after the harsh cold, each Japanese person can blossom magnificently with hope for the future. This desire to maintain such a Japan is encapsulated in the era name "Reiwa." (Referring to Cabinet Office website)



Private female-only  
accommodation

## • Tsukifunean



Near Ishibutai Bus Stop

Tsukifunean is a private female-only accommodation located in Asuka Village. Each room is equipped with a private terrace.

- **Address** 564 Sakata Asuka-mura Takaichi-gun Nara, JAPAN
- **Costs** 1 Night Stay: from 20,000 yen for 2 adults
- **Website** <https://tsukifune.com/>

# Let's Stay!

## Asukamura

Near Kawahara Bus Stop

## • B & B Asuka

B&B Asuka is a Western-style bed and breakfast adorned with British antique furniture. Located in the heart of Asuka, it is a 30-minute walk to Amakashi Hill and provides excellent access to Tachibana Temple.

- **Address** 〒634-0141 55 Kawahara, Asuka Village, Takaichi-gun, Nara
- **Costs** 1 Night Stay for 2 Adults (Total, Tax Included):  
From 15,400 yen  
Per person: From 7,700 yen
- **Website** <http://www.bb-asuka.jp/>



Location: Asuka Station

## • Coffee House Misono



Operating as a coffee shop in Asuka Village for 43 years. The interior features high ceilings and a calm atmosphere, conveniently located near Asuka Station. The appeal lies in the four types of morning sets. It's a place to relax and unwind from your travels while enjoying delicious coffee.

- **Address** 1-1 Misono, Asuka Village, Takaichi District, Nara Prefecture, 634-0144, Japan  
1-minute walk from Asuka Station
- **Opening Hours** 7時半-18時
- **Closed** Open year-round (no holidays)

Offers lunches made with local vegetables, specialty coffee, and homemade cakes.

- **Address** 2-1-1Koshihara, Asuka Village, Takaichi District, Nara Prefecture, Japan  
1-minute walk from Asuka Station
- **Opening Hours** Weekdays: 11:00 AM to 5:00 PM.  
Weekends and Holidays: 11:00 AM to 6:00 PM
- **Closed** Wednesdays and the 2nd and 3rd Tuesdays of each month

# Let's Taste!

## Asukamura

## • Matsuyama Cafe



Location: Ishibutai Bus Stop

## • Cafe Kotodama



A cafe renovated from a 200-year-old sake brewery, preserving its traditional Japanese house style.

- **Address** 1223 Oka, Asuka Village, Takaichi District, Nara Prefecture, 634-0111, Japan
- **Opening Hours** Weekdays: 10:00 AM to 4:30 PM.  
Weekends and Holidays: 10:00 AM to 5:00 PM.  
Lunch: 11:00 AM to 2:00 PM
- **Closed** Tuesday and the 3rd Wednesday of each month

"poca frere" is a cafe known for its heartwarming dishes that warm both the body and soul. Popular for lunch menus using seasonal vegetables from Asuka Village and homemade desserts.

- **Address** 51-1 Shimano, Asuka Village, Takaichi District, Nara Prefecture, 634-0112, Japan
- **Opening Hours** 11:30 AM to 5:00 PM
- **Closed** Wednesdays

# Let's Taste! Asukamura

## • poca frere



Location: Kawahara Bus Stop

## • Coffee Sanpo



Specializes in freshly roasted coffee, café service, selling coffee beans, and Hainan chicken rice.

- **Address** 55-4 Oka, Asuka Village, Takaichi District, Nara Prefecture, 634-0111, Japan
- **Opening Hours** 11:00 AM to 5:00 PM (Last order at 4:00 PM). Lunch served until 3:00 PM
- **Closed** Every Thursday and Friday

# Let's Taste!

## Asukamura

Location: Asuka Daibutsu Bus Stop

## • Genkina Kajitsu Kobo

Offers low-sugar gelato made from homegrown fruits, emphasizing natural flavors.

- **Address** 207-7 Asuka, Asuka Village, Takaichi District, Nara Prefecture, 634-0103, Japan
- **Opening Hours** 11:00 AM to 5:00 PM (March to November)
- **Closed** Fridays, Saturdays, Sundays, and holidays. Winter Closure: December 1st to the end of February





Meeting people can change your life.

When you feel excited about something, it complements others' strengths and creates immense power—100 times, even 1000 times over."

## Hanakoubou Kamukamu Mrs. Yoshimura

"花工房花夢花夢" operated by Ms. Yoshimura, an advisor for flower town development and recipient of the National Flower Contest Awards such as the 34th Agricultural, Forestry, and Fisheries Minister's Award, the 37th Construction Minister's Award, and the 40th Mainichi Shimbun Award, offers participatory garden experiences rich with stories in Asuka Village. At this place where mortar sculptures and seasonal flowers harmonize, regular open garden events are held, alongside seminars on planting and more.

The Flower Valley Old Village, formed by works of students from the flower workshop, opened in 2019 and is still developing. There are various ways to enjoy it—whether taking photos at your favorite spot, participating in events, or even learning mortar craftsmanship under Ms. Yoshimura's guidance, who received landscape design training from Disney craftsmen.



\*This pamphlet was created by students of Nara Women's University for the purpose of contributing to local communities in Nara. ("Career Design Seminar B (37) International Group Work A" class at Nara Women's University in the first semester of the 2024 academic year)

**Nara Women's University** is a national women's university located in Nara City. It has four faculties (Faculty of Letters, Faculty of Science, Faculty of Human Life and Environment, and Faculty of Engineering) and Graduate School of Humanities and Sciences (master's and doctoral courses).

For more information about Nara Women's University and its classes.



What did you think of this creation by the students?

