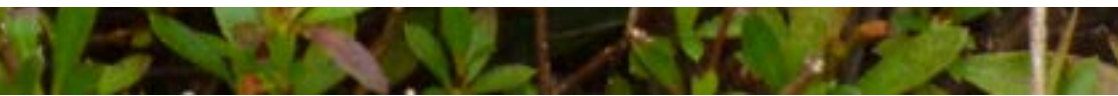




# **TO TAKATORI TOWN**

## **A TOWN DECORATED WITH FLOWERS**

This content was created by students of Nara Women's University for the purpose of contributing to local communities in Nara.  
(2025 first Semester Course: Introduction to International Campus NARA (A) )





## **SPRING - CHERRY BLOSSOMS AND RAPE BLOSSOMS COVER THE TOWN**

**IN SPRING, CHERRY BLOSSOMS BLOOM IN FULL BLOOM AT TSUBOSAKA-DERA TEMPLE, TAKATORI CASTLE RUINS, AND ALONG THE TOSA KAIDO ROAD, AND RAPE BLOSSOMS ARE ALSO VIBRANT. ALONG WITH THE HISTORICAL SCENERY, YOU CAN FEEL THE ARRIVAL OF SPRING.**



## **SUMMER - HYDRANGEAS AND FLOWERS BLOOMING VIGOROUSLY**

**TAKATORI TOWN IN NARA PREFECTURE IS A TOWN RICH IN NATURE, DECORATED WITH FLOWERS OF EVERY SEASON. THE CONTRAST BETWEEN THE HISTORIC SCENERY AND THE FLOWERS IS FASCINATING.**

**HYDRANGEAS IN EARLY SUMMER AND SUNFLOWERS IN MIDSUMMER BRIGHTEN UP THE ROADSIDES AND MOUNTAIN VILLAGES OF TAKATORI TOWN. WHY NOT TAKE A STROLL WITH YOUR CAMERA?**





## **WHY NOT TAKE A STROLL AROUND TAKATORI TOWN AND ENJOY THE FLOWERS?**

**WHY NOT TAKE A STROLL AROUND TAKATORI TOWN TO SEE THE FLOWERS?**

**NO MATTER WHAT SEASON YOU VISIT, YOU'LL BE ABLE TO ENCOUNTER FLOWERS. GRAB YOUR CAMERA AND ENJOY TAKATORI TOWN'S "FLOWER TIME"**



**TAKATORI TOWN OFFICIAL MASCOT**

**TAKATORIN**



## WHO IS TAKATORIN?

TAKATORI TOWN'S TOURISM MASCOT CHARACTER, "TAKATORI-RIN," IS A VERY LIVELY CHICK BORN AS A "CHICK" AT TAKATORI CASTLE!

THE NAME "TAKATORI-RIN" IS A COMBINATION OF "TAKATORI-CHO" (TAKATORI TOWN) AND "HINA (TORI)" (HINA BIRD)

- TAKATORIN'S WEARING A TAKATORI CASTLE HELMET!
- TAKATORIN'S RELIABLE AND LOVES HISTORY!
- TAKATORIN DOESN'T FORGET TO DRESS UP FOR HINAMATSURI

01



THE JINTOSEKI STONE

KOEIJI TEMPLE







## A HIDDEN TEMPLE OF PEACE

KŌEIJĪ TEMPLE STANDS QUIETLY ALONG THE MAINSTREET IN TAKATORI TOWN, FAR FROM THE TOURIST CROWDS. A PERFECT PLACE TO TAKE A BREATH AND REFLECT.

AT THE TEMPLE ENTRANCE, GENTLE BUDDHIST TEACHINGS ARE DISPLAYED ALONGSIDE SEASONAL FLOWERS, AND IN THE FRONT GARDEN ON THE LEFT SIDE OF THE APPROACH PATH STANDS A MYSTERIOUS STONE STRUCTURE KNOWN AS THE “HUMAN HEAD STONE.”

A NOSTALGIC LANDSCAPE CREATES A TRANQUIL ATMOSPHERE. TAKE A SLOW WALK AND FEEL THE STILLNESS.





## THE JINTOSEKI STONE

### WHAT DO YOU FEEL WHEN YOU LOOK AT THE “FACE” OF THIS STONE?

---

AS ITS NAME SUGGESTS, THIS STONE IS SHAPED LIKE A HUMAN HEAD. IT LOOKS AS IF PARTS LIKE THE EYES, NOSE, AND MOUTH HAVE BEEN CARVED INTO IT NATURALLY, AND IT NEVER FAILS TO DRAW THE ATTENTION OF THOSE WHO SEE IT.

#### WHO MADE IT, AND WHY?

SOME SAY IT'S SMILING, OTHERS SAY IT'S FROWNING... DEPENDING ON WHERE YOU STAND, IT TELLS A DIFFERENT STORY.

THIS MYSTERIOUS STONE CHANGES ITS EXPRESSION DEPENDING ON THE ANGLE YOU VIEW IT FROM. VARIOUS THEORIES EXIST ABOUT ITS ORIGIN, AND IT IS CONSIDERED A “MYSTERIOUS STONE STRUCTURE.”

IT IS SAID TO HAVE BEEN CREATED IN THE NEIGHBORING VILLAGE OF ASUKA AROUND THE 6TH TO 7TH CENTURY AND THEN TRANSPORTED TO THIS LOCATION.



## ACCESS

LOCATION: 7-8 MINUTES ON FOOT FROM KINTETSU “TSUBOSAKAYAMA STATION”

1518-1 KANKAKUJI, TAKATORI-CHO, TAKAICHI-GUN, NARA PREFECTURE

FREE FOR VIPLEASE INQUIRE IN ADVANCE FOR VISITS AND TOURS.  
(TEL) 0744-52-2967SIT

# 02

## KOJIMADERA TEMPLE

It's a historic temple of the Koyasan Shingon sect, enshrines the Great Sun Buddha as its principal image!

The “Mandala of the Two Realms” preserved at Kojimadera temple is a National Treasure, bestowed as a reward for Emperor Ichijo's recovery from illness during the mid-Heian period. (It is currently deposited at the Nara National Museum.)



# WELCOME





## KOJIMA-DERA

**Q**

**WHAT CAN WE SEE?**

---

**A**

The main gate at the front was relocated from the second gate of Takatori Castle, which was abandoned in 1903. It's the only surviving structure from Takatori Castle and is extremely valuable.

**Q**

**WHERE IS THE ADDRESS?**

---

**A**

15-minute walk from Kintetsu Tsubosakayama Station  
544 Kankaku-ji, Takatori-cho  
As there is currently no resident priest, please contact  
Kumeda-ji Temple in Kashihara City before visiting.  
(TEL) 0744-27-2470

03

Takatori Town's  
Secret Healing Spot

# KŌMYŌJI TEMPLE





# What is Kōmyōji?

**A Jōdo-shū temple with a long history dating back to the Nara period.**

**Just a 7-minute walk from Kintetsu Tsubosakayama Station, it's a place where you can spend some peaceful and quiet time.**



# Cultural properties that soothe one's soul

One of the unique charms of this temple is the rare opportunity to closely encounter Buddhist statues from the Heian period.

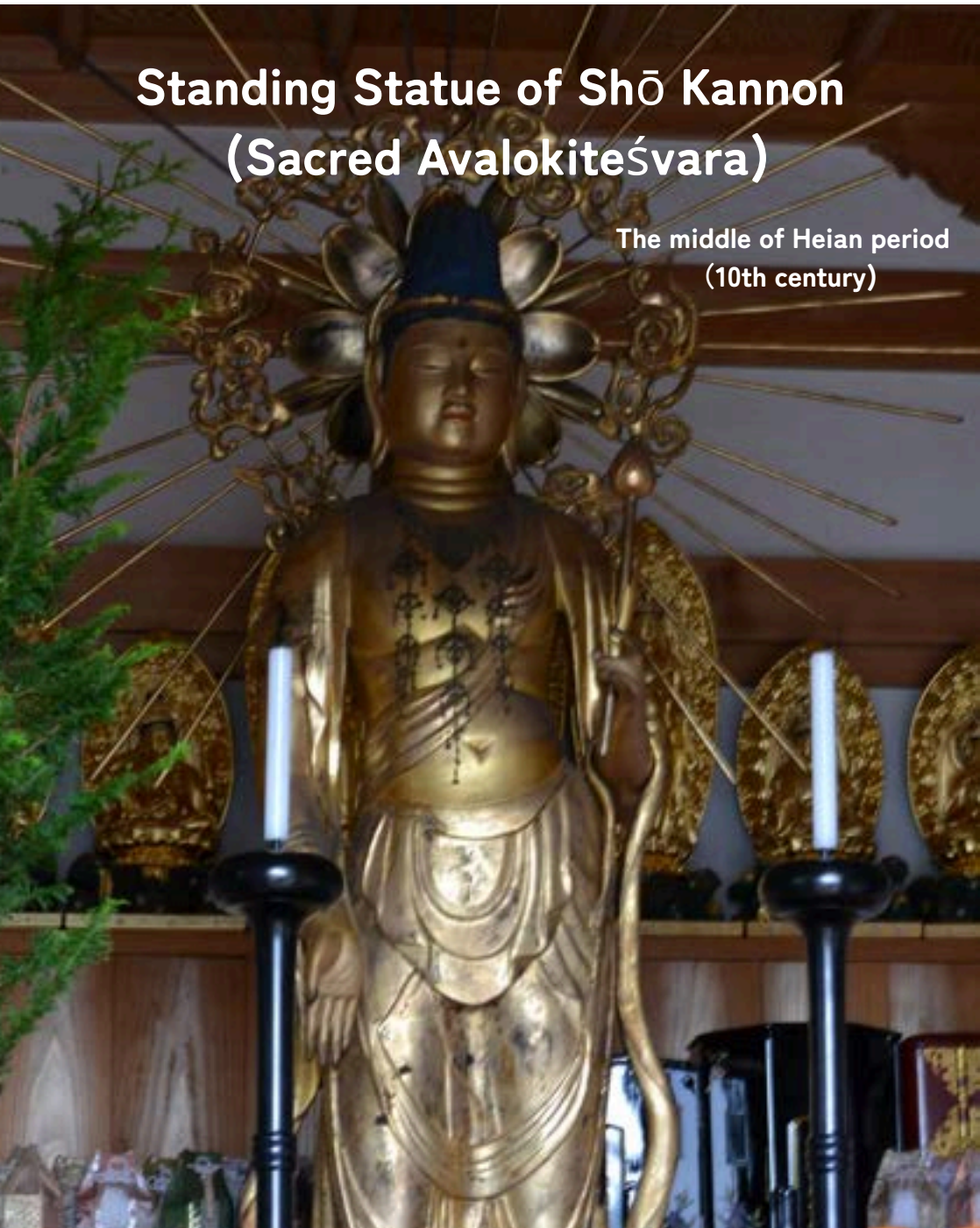
## Seated Statue of Amida Nyorai (Amitābha Buddha)

Late Heian period  
(11th~12th century)



# Standing Statue of Shō Kannon (Sacred Avalokiteśvara)

The middle of Heian period  
(10th century)





**We invite you to experience the serenity  
and the sacred space of prayer for yourself.**

## **Kōmyōji**

**307 Shimotosa, Takatori Town, Takaichi District,  
Nara Prefecture**

**Please inquire in advance regarding visits  
0744-52-2054**



# 04

## The Townhouse KUSURI MUSEUM

Since ancient times, Takatori Town has been blessed with abundant natural resources, yielding a wealth of medicinal plants and animals.

If you wish to learn about the history and culture of medicine, please visit the Medicine Museum!

Along the path to the Kusuri Museum, tiles depicting nine medicinal herbs are embedded in the pavement—let's look for them.



WELCOME



## WHAT CAN WE SEE?

IN THIS TOWN, TRADITIONAL FAMILY-RECIPE MEDICINES BASED ON CHINESE HERBAL MEDICINE HAVE BEEN MADE USING SECRET FORMULAS. AT THE MEDICINE MUSEUM, YOU CAN SEE HOW OLD-FASHIONED PILLS WERE MADE AND THE TOOLS USED FOR MEDICINE PRODUCTION.

## BEHIND THE SCENES OF TRADITIONAL MEDICINE

THE SECRET-RECIPE MEDICINE WAS ONCE SPREAD THROUGHOUT THE COUNTRY BY ASCETIC MONKS, BUT DURING THE EDO PERIOD IT BECAME WIDESPREAD AS A HOME-DELIVERY MEDICINE SERVICE. MEDICINE MERCHANTS KNOWN AS “KUSURI-URI” ROAMED THE COUNTRY, DELIVERING HEALTH DOOR TO DOOR.







## TRY AND TAKE HOME A PIECE OF HISTORY

AT THE MEDICINE MUSEUM, YOU CAN EXPERIENCE FIRSTHAND MAKING TRADITIONAL MEDICINES USING A TOOL CALLED A “YAGEN”, AS WELL AS TOOLS USED FOR BAGGING PILLS (MEDICINE BALLS). THE MUSEUM ALSO DISPLAYS NUMEROUS “YAKUTAI” (MEDICINE PACKAGING) USED IN THE PAST, MAKING IT A POPULAR SPOT TO ENJOY THEIR RETRO DESIGNS.



## ACCESS

**LOCATION: APPROXIMATELY 20 MINUTES ON FOOT FROM KINTETSU  
“TSUBOSAKAYAMA STATION”  
20-2 KAMITOSASA, TAKATORI-CHO, TAKAICHI-GUN, NARA PREFECTURE**

**BEHIND THE TOURIST INFORMATION CENTER “YUME SŌKAN”**

**TEL: 0744-52-1150**

**OPENING HOURS: 9:30 AM - 4:30 PM (CLOSED DURING NEW YEAR HOLIDAYS)**

**OPEN FREE TO VISIT**

**WHY NOT EXPERIENCE HISTORY AND THE WORLD OF MEDICINE WHILE  
WALKING THROUGH THE CHARMING STREETS OF THE CASTLE TOWN?**

# 05

**Takatori Town Tourist  
Information Center**

## **MUSŌKAN**



# WELCOME





## **Musōkan**

**Tourist information center located  
along Tosa Kaido Road!**

**The building is a renovated drapery  
shop from the Taisho era**

**You can feel the history of the  
building.**



**The hub for Takatori Town tourism information.**

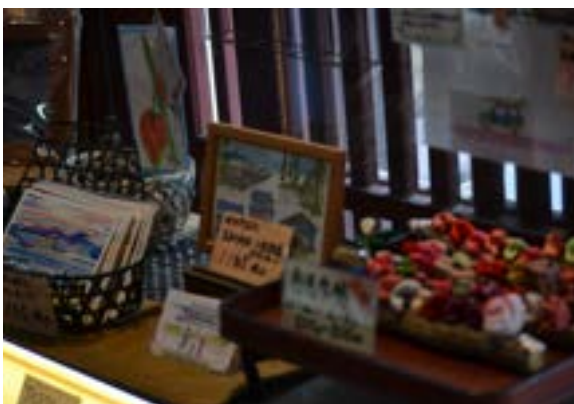
**You can purchase local specialties and other items here.**

**You can obtain Takatori Town tourist materials and pamphlets, and buy drinks like coffee.**

**It's also a convenient rest stop for hikers heading to Takatori Castle or Tsubosaka Temple.**

**The second floor occasionally hosts gallery exhibitions, allowing visitors to relax and enjoy the atmosphere of a traditional machiya townhouse.**

**It's a richly diverse spot where you can also view a CG-restored video of "Takatori Castle."**



## Japan's 100 Famous Castles

### Stamp

**Takatori Castle is the only castle in Nara Prefecture selected as one of Japan's Top 100 Castles. The Musōkan features a stamp for this designation. No.61**

**※Outside the building during closed hours**



### Access

**Location: Approximately 20 minutes on foot from Kintetsu  
“Tsubosakayama Station”**

**20-2 Kamitosasa, Takatori-cho, Takaichi-gun, Nara  
Prefecture**

**TEL: 0744-52-1150**

**Opening Hours: 9:30 AM to 4:30 PM**

**Closed during the New Year holidays**



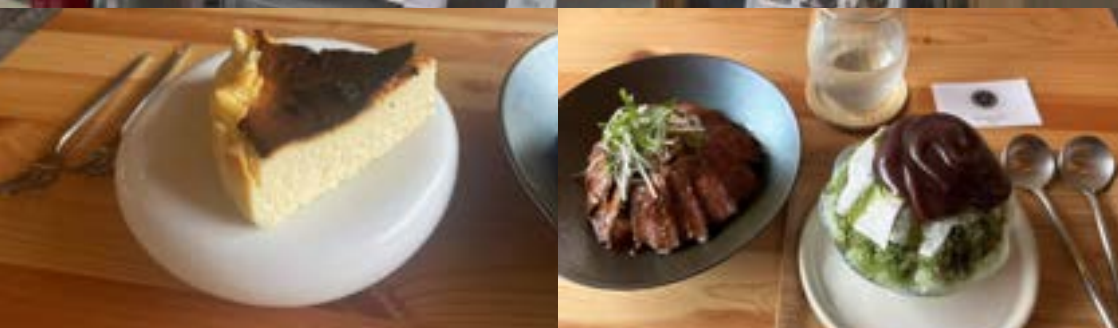
# 06

## RESTAURANT 01

IN TAKATORI TOWN, THERE IS A LOCATION WHERE THE TOWN HAS ACQUIRED FORMER "MACHIYA" TOWN HOUSES AND CONVERTED THEM INTO NEW BUILDINGS THAT BLEND WITH THE STREETScape. THERE, LIMITED-TIME CHALLENGE SHOPS ARE OPENED WITH THE AIM OF REVITALIZING THE TOWN'S TOURISM AND COMMERCE. AFTER THE FIRST SHOP OPENED IN 2021, THE SECOND SHOP, "MA MAISON N° 8," IS NOW OPEN (UNTIL THE END OF MARCH 2026).



## MA MAISON N° 8



- **BEEF STEAK RICE BOWL**

with rich umami!

- **MATCHA SHAVED ICE DESSERT**

Perfect for photos! Sweetness level:  
**MAX!**

- **BASQUE BURNT CHEESECAKE**

Intensely rich and smooth texture!

NOTE: THIS  
INFORMATION IS  
CURRENT AS OF 2025.  
FOR THE LATEST  
INFORMATION ON THE  
CHALLENGE SHOP,  
PLEASE CHECK THE  
MOST RECENT  
UPDATES.

Next spot!

07

# TSUBOSAKA -DERA TEMPLE



- This temple is famous as the “Eye Kannon” and is revered by those praying for healing from eye ailments!
- It's one of the pilgrimage sites on the Saigoku 33 Kannon Pilgrimage, with its principal image being the “Seated Eleven-Faced Thousand-Armed Kannon Bodhisattva.”
- In spring, see the “Cherry Blossom Buddha”; in early summer, the “Hydrangea Corridor”; and in autumn, the “Maple Corridor”!
- The “Great Hina Mandala” display featuring over 4,500 dolls in March is also a must-see!
- It's popular with overseas tourists too.

WELCOME





## TSUBOSAKA-DERA

**Q**

**WHAT KIND OF SCENERY CAN YOU ENJOY?**

---

**A**

The 20-meter-tall Great Kannon Stone Statue, the nationally designated Important Cultural Property Three-Story Pagoda, and the seasonal highlights—the “Cherry Blossom Buddha” in spring, the “Hydrangea Corridor” in early summer, and the “Maple Corridor” in autumn—create stunningly photogenic scenes throughout the year! Especially popular are the nighttime viewings of the illuminated “Cherry Blossom Buddha” and “Maple Corridor,” which offer a truly magical experience!

**Q**

**HOW LONG HAS TSUBOSAKADERA BEEN HERE?**

---

**A**

It was built about 1300 years ago during the nara period. It is a temple that has been worshipped by many people over its long history!



**BE HELD IN 2025**

## **HYDRANGEA CORRIDOR**

### **YOU CAN SEE THE "HYDRANGEA CORRIDOR" FROM LATE MAY TO EARLY JULY!!**

---

Event period(2025): Saturday, May 24 - Sunday, July 6, 2025

Place: precincts of tsubosaka-ji temple, kannon corridor, and around stone Buddha statues

Admission fee: included in the regular admission fee (adult 800 yen)

Event page: <https://www.tsubosaka1300.or.jp>

About 3,500 hydrangeas bloom throughout the temple grounds, and the stone Buddha and the daikannon statue are decorated in colorful colors. The corridor of kannon is a tunnel of hydrangea, which is definitely photogenic!

The contrast between the hydrangea and the huge stone kannon statue is very beautiful. It has a fantastic atmosphere even on rainy days, so I recommend it!

there is also a sutra copying experience and a limited time goshuin. You can spend a special time only at a temple!

# ADDRESS

**Takatori-cho,  
takaichi-gun,  
nara prefecture**



**Visiting Hours: 8:30 AM - 5:00 PM (Last reception at 4:30 PM)**

**Admission Fee: 800 yen for adults, 200 yen for junior high and high school students, free under 5 years old**

**Parking: Available (Fee required)**

## **[Access]**

From Kintetsu Yoshino Line “Tsubosakayama Station”, take the Nara Kotsu Bus bound for “Tsubosakadera-mae”.

Get off at the final stop “Tsubosakadera-mae”. Travel time: 10 minutes

※ Operates only on Saturdays, Sundays, and holidays

## **<Walking/Hiking>**

From Kintetsu Yoshino Line “Tsubosakayama Station” ~ Tosa Kaido ~ Hiking Trail

Travel time: Approx. 40-50 minutes. Hiking maps are available at the tourist information center “Musokan” along Tosa Kaido or from the Takatori Town Tourism Guide website.





Recommend spot

08

# SHINGYŌJI TEMPLE



WELCOME



**A temple with the graves of Osato and Sawaichi, the couple who were the subject of a jōruri play titled “Tsubosaka Reigenki” (The Tale of Tsubosaka).**

## **Access**

**Shimoko-jima, Takatori Town, Takaichi County, Nara Prefecture**

**20 min. walk from Tsubosakayama Station**

## What is “Tsubosaka Reigenki”?

**Jōruri depicts the love between a blind masseur, Sawaichi, and his wife, Osato.**



**Statues of Osato and Sawaichi  
at Tsubosaka Temple**

### **Synopsis.**

**Osato prays every night for her husband's eyes to get better.**

**Sawaichi suspects his wife of cheating on him, but when he learns the truth, he is ashamed and throws himself into the water. Osato followed him.**

**Kannon, the Goddess of Mercy at Tsubosaka-dera Temple, took pity on them and saved them, and healed Sawaichi's eyes as well.**



# 09



**RESTAURANT 02**





## TOWNHOUSE CAFE “NOCONOCO”



- Delicious lunches and sweets made with homemade kōji, gentle on the body and perfect for beauty.
- Hearty portions that will leave your tummy nice and full!

### OPENING HOURS:

11:00 OPEN

15:30 LAST ORDER

16:00 CLOSE

CLOSED THURSDAYS

TEL: 0744-52-4771



# **Stamps and Souvenir**



# Souvenir

@Musōkan

Takatori Castle-themed items

- Postcards
- Castle rice crackers
- Castle stamps
- Magnets, key chains
- Polo shirts featuring the “Strongest Castle” logo
- etc.



Other items include...  
Bath salts and herbal teas made with medicinal herbs like “YAMATO-TOKI” (japanese angelica) root, as well as craft cola  
Fresh local vegetables and their processed foods, handmade accessories, and more





**@Unmanned sales  
booth along the Tosa  
Kaido Road**



**Vegetables , seasonal  
fruits, wild mountain  
vegetables, and other  
produce picked that  
day are sometimes  
sold.**

# Stamps

**@Musōkan**

**The “Japan 100 Famous Castles” stamp of Takatori Castle**



**@Tsubosakadera Temple**

**At the “Yamato Kannon Hydrangea Corridor,” you can collect temple stamps and goshuin seals by visiting four temples in Nara Prefecture: Hasedera, Okadera, Tsubosaka Temple, and Muroji Temple.**

- **“Hydrangea Paper-Cut Goshuin” (May–July):** Paper-cut goshuin designed using each temple's unique features.
- **The stamp rally event is also fun! Overlay stamps from all four temples to complete a single picture.**

**“Hydrangea Corridor: Overlay Color Pilgrimage” (May–July)**

**“Maple Corridor: Overlay Color Pilgrimage” (October–December)**





子嶋寺



2



6



卍

光永寺

1



のぼさかやま色

3

光明寺

卍



カフェ  
ランチ



5

夢創館



TAKATORI-TOWN TOSA



You can obtain detailed maps on the Takatori Town Tourism Guide website.



This hand-drawn map was created by NWU students to convey the fun of hiking in Takatori Town, with shapes, distances, and sizes greatly exaggerated for illustrative purposes. Please refer to separate materials for accurate maps.

# ROAD HIKING MAP



This content was created by students enrolled in the 2025 first semester course “Introduction to International Campus NARA (A)” at Nara Women's University, and revised with the cooperation of the Takatori Town Tourism Association and the Takatori Tourism Volunteer Guide Association. (2025 Nara Women's University Project: “Formation of a Central Hub for High-Quality Tourism Content for Overseas Visitors and Establishment of a Living Lab”)

**Nara Women's University** is a national women's university located in Nara City, Japan. It was established in 1908 as the Nara Women's Higher Normal School. The university has four faculties: Faculty of Literature, Faculty of Science, Faculty of Human Life and Environmental Studies, and Faculty of Engineering. It also has graduate school of Humanities and Sciences (master's and doctoral courses).



For more information  
about Nara Women's  
University and its  
class.



What did you  
think of this  
contents by  
NWU students?

